

OMNISEC SOFTWARE: v10.41 (PSS0051-07) SOFTWARE UPDATE NOTIFICATION

Introduction

This document details the release of software PSS0051-07: v10.41 of the software for the OMNISEC system. It covers software issues fixed and new features introduced. This information is required to perform a risk analysis to determine if the software should be installed. In this risk analysis the benefits of the new features provided and resolved software issues must be weighed against the risk of new issues that may be introduced to vital areas of the software or possible changes to the results of future analysis. Installation instructions are provided.

Installation

It is assumed that you have authority to install or update software within your facility. It is also assumed that you have Administrator rights for the system upon which the software is installed, as this is a requirement of the installation process. If you do not have this authority please consult with your I.T. support department before proceeding.

Minimum System Requirements

Intel Core i7 processor, 4 GB RAM, 500 GB free hard disk space, 1600 x 900 screen resolution running in 16 bit color mode, CD-ROM drive, 1 free USB port, Windows 7 or 10 64bit Professional operating system.

Recommended System Requirements

The recommended computer system requirements for running this software are highlighted in table 1 below.

Table 1: Recommended system requirements for the OMNISEC software.

Feature	Specification
Processor Type	Intel Core i7 processor (Quad Core HT, 3.1 GHz Turbo, with HD Graphics),
Memory	8 GB RAM
Hard Disk Storage	500 GB free hard disk space,
Additional Storage Media	CD-ROM drive,
Display Resolution	1920 x 1080 full HD screen resolution running in 16 bit color mode,
Connectivity	1 free USB port,
Operating System	Windows 7 or 10 64 bit Professional operating system.

Supported operating systems

OMNISEC software v10.41 is compatible with Windows 7 or 10. Only 64 bit Professional versions are supported.

Windows XP, Windows Vista, and Windows 8 are not supported.

Supported Languages

- English

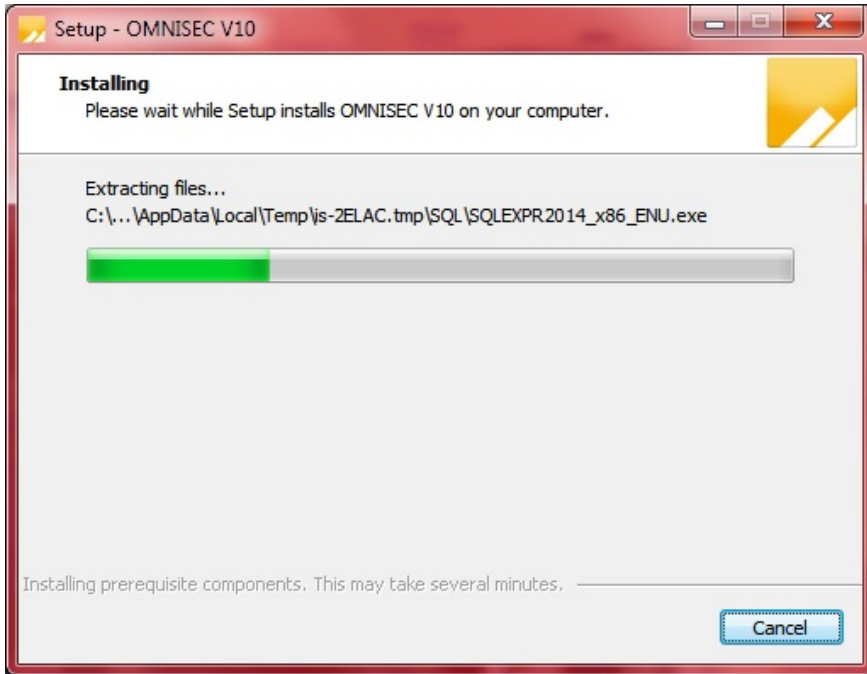
Installation Instructions

Windows 7 or 10 64 bit Professional

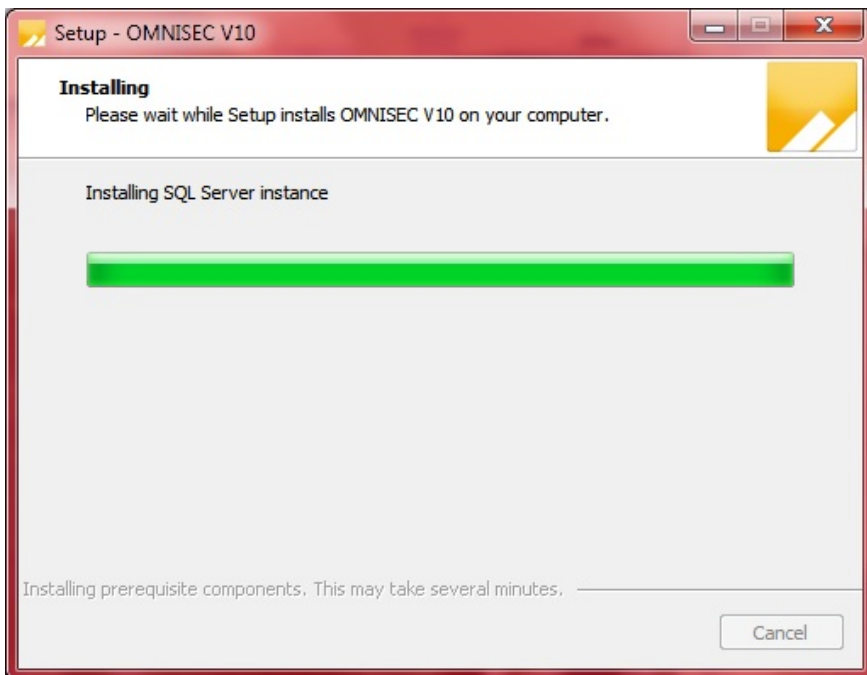
In most cases, OMNISEC should install automatically when the CD is inserted in the drive. If it doesn't, the user can double-click on the installer file, OMNISEC1041.exe, to begin the installation.



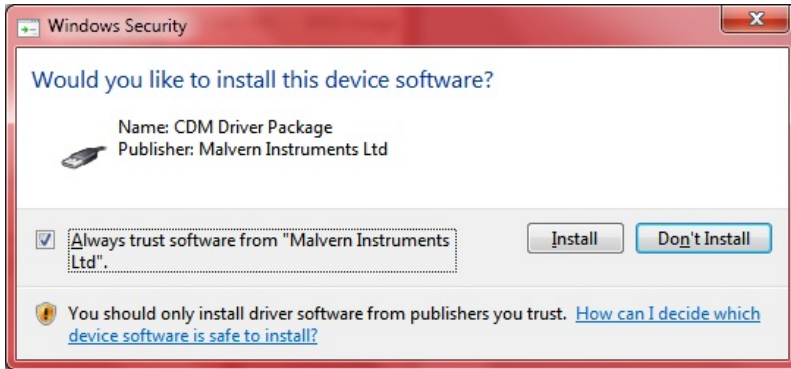
When the Setup window appears, select Next to process. You can select cancel if you would like to stop the setup and continue another time.



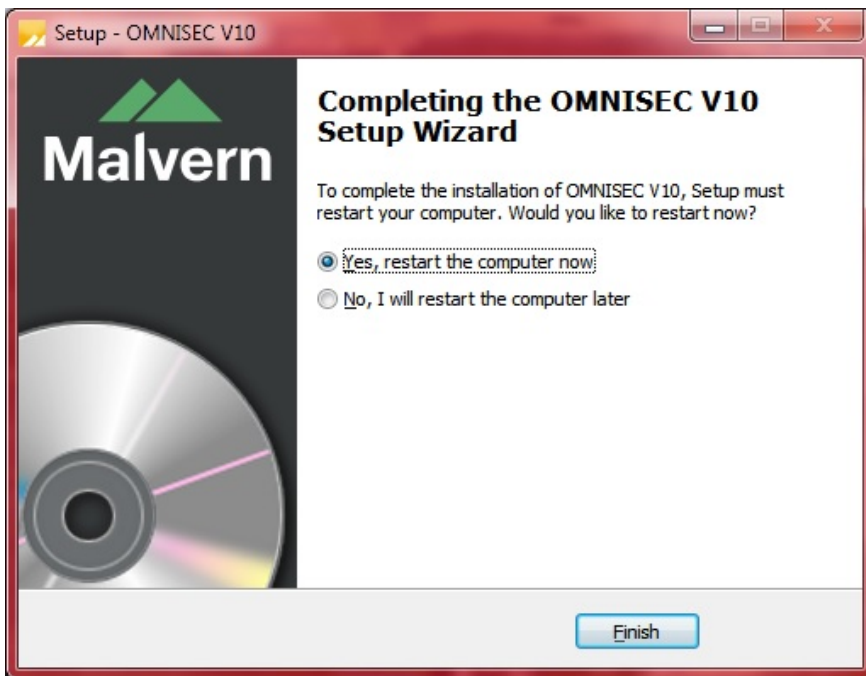
Once you have followed all of the instructions and clicked "Install", the software will begin the installation process.



If this is the first time OMNISEC v10 is being installed, it will install a 2014 SQL Server instance. This process may take 10 to 20 minutes to complete.



During the installation, a Windows Security window may appear asking if you would like to install a device. Select "Install" to install the device.



The last section in the Setup window will inform you that the computer needs to be restarted to complete the setup. Once the computer has been fully restarted, OMNISEC v10 will be ready to use.

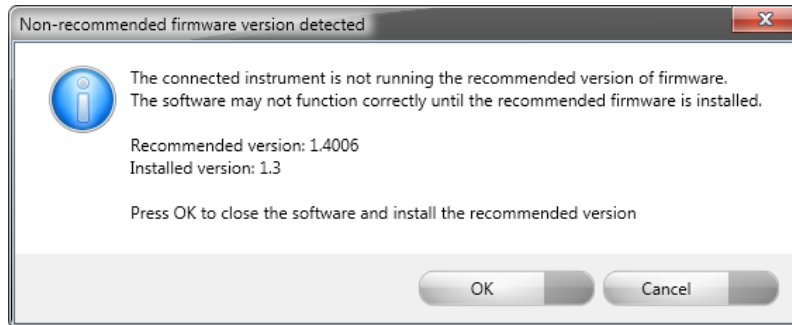
Connecting the OMNISEC to a PC

With the software installed, the instrument should be connected via the USB port, and the system switched on. If present, turn on OMNISEC RESOLVE first and wait 30 seconds for it to complete its startup. Next, turn on OMNISEC REVEAL and wait 1 minute to allow it to complete its startup and connect to OMNISEC RESOLVE. When the two instruments are connected, the light bars on both instruments should be green.

If this is the first time connecting the instrument to the PC, there will be a message that appears saying "Installing device driver software". The names used to identify the drivers will be "CMULx25", "CHROME TAU A" and "CHROME TAU B". Allow the installation to proceed and do not disconnect the instrument from the PC during this process. Once the drivers have been installed, Windows will indicate that they are ready to use.

Updating the OMNISEC REVEAL firmware

The first time you launch OMNISEC 10.41 with an OMNISEC REVEAL connected, you may be prompted to install a new version of the instrument firmware.



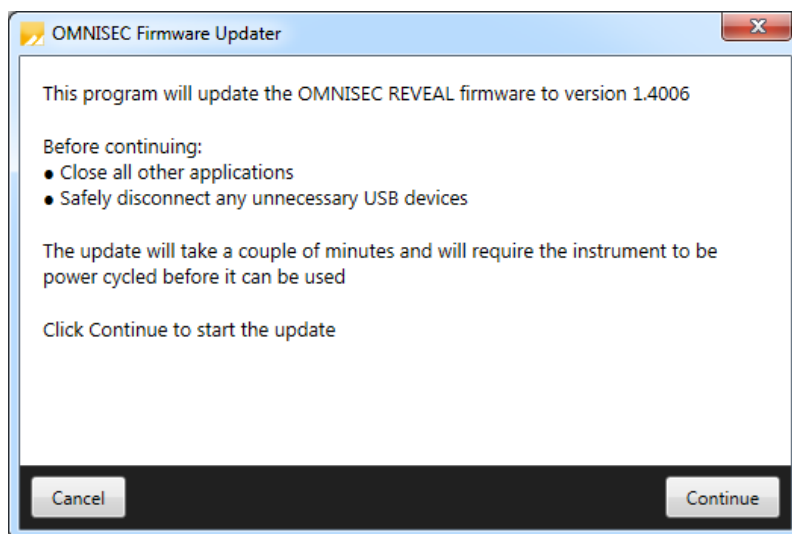
Updating the firmware improves system reliability and compatibility with the version of OMNISEC V10 you have installed on your computer. The update process takes up to 10 minutes and the instrument will need to be power cycled after the update is complete.

Click **OK** to close the OMNISEC application. After a few seconds the OMNISEC Firmware Updater program should automatically launch.

Note:

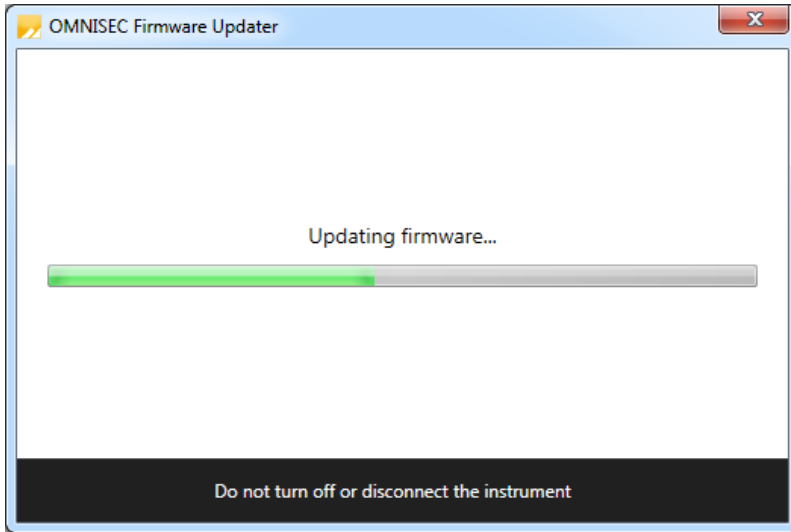


If the OMNISEC Firmware Updater fails to open, or if the updater says it could not detect the instrument, disconnect the instrument, relaunch OMNISEC V10 and reconnect the instrument. You should receive the update prompt to try again.



When the OMNISEC Firmware Updater launches, you should carefully read the information presented to you before continuing.

Click **Continue** to start the update process.



The update process takes several minutes. It is recommended that you do not do anything else on your computer during the update.

After the firmware update has completed, you will be prompted to power cycle the instrument. Once the power up cycle has completed and you see the green lights on the front of RESOLVE and REVEAL click **Exit** and relaunch OMNISEC V10.



Note:

If the update process fails, you don't see two green lights on the instrument or you are still being prompted to update the firmware, try power cycling the instrument and restarting OMNISEC V10 again.

Uninstall Procedure

The software can be uninstalled using the 'Programs and Features' section of the Windows 7 'Control Panel' or the 'Apps' section of Windows 10 'Settings'.

New Features

The main new features in this release are listed in Table 2.

Table 2: Main features introduced in OMNISEC 10.41

Reference	Feature
79971, 79974, 85171, 85965, 85966, 86146	Improvements to transducer overpressure protection
86877, 87005, 87010, 87015	Automated pump back seal washing system

Fixed issues

The main issues fixed in this release of the software are listed in Table 3.

Table 3: Bug fixes implemented in OMNISEC 10.41

Reference	Issue	Comment
66441	Legend items should be in the same order as they appear in the record view	Fixed
66452	User can delete Sequence & Sample Name from Edit run conditions and it causes error in saving analysis	Fixed
72691, 75951, 79243, 80724	Improvements to derived data view display and features	Improvements have been made to the performance and copying features of the derived data view.
74039	21 CFR features are not getting saved without giving any error message if insufficient permissions on certain files or folders	Fixed
74280	Edit Run Conditions: Concentration editor doesn't allow enough precision	Precision increased to 6 decimal places
80199	Sequence continues when pump has been stopped due to safety event	Sequence stops when a safety event occurs.
80541	Prevent running samples when a safety event is still raised	Fixed
80556	Rework instrument status/error handling system.	Improvements made to the error handling.
80659	Empty channels are being saved during acquisition for missing detectors.	Fixed
80910	Changing UV Wavelength before acquisition causes index out of range exception.	Fixed
81100	Freeze then crash when failing to zero the viscometer.	Fixed
82359	Software may refuse to open when there has been a vapor leak.	Fixed
83147	Add Splined LogM and Splined LogIV into Derived data copy function	Fixed
83287	Pre-sequence initialisation skipped when no detectors are online	Fixed
83670, 88256, 94690, 94691	Improvements to RI/viscometer zeroing.	Fixed. Stop zeroing RI/Viscometer when software timeout occurs.
83815, 83816, 84008, 83886, 88519	Performance improvements to memory handling.	Fixes to memory usage improve the performance of the software.
84481	Installer: Successful SQL Server installer exit codes treated as failures	Installer handles installation codes correctly.

84614	Folder permissions are set to allow users to delete Audit Trail files on pre-windows 10 systems.	Fixed.
88520	Overlay chart axes tied for zoom	Fixed. Chart axis no longer tied.
88543	Database window scroll locks out	Fixed
88616	Charts don't show uncalculated injections correctly	Fixed
89052	Update Firmware Updater to firmware 1.5	During installation firmware will update to v1.5001.
89200	Overlaying multiple injections with multiple different number of peaks causes fatal error	Injections can be overlaid with a different number of limits.
90445	Error when you abandon changes after deleting limits or baselines	Fixed.
90679	Don't forcibly exit when firmware version cannot be determined	Communication error so connection refused, and error displayed.
96392	Undesirable safety event when pressure reaches 0MPa	Fixed.

Known Issues

The following software bugs have been discovered within the software, and will be investigated as part of a future release. Please follow the suggested work-around.

Table 4: Known issues in OMNISEC v10.41 software.

Reference	Issue	Workaround
65448	UV usage time displays unexpected values	No workaround
69481	'Printing' reports to PDF uses wrong default filename	manually filling in the filename
69856	Application crashes when trying to print or print preview a report where a table is longer than the page	Break long report tables into separate smaller tables
72077	No ability to manually zoom out on the UV Spectrum Map chart	Use the Zoom Back and Full Zoom Out functions in the Ribbon Bar
72681	Audit Trail event details cannot be copied	No workaround
72688	Current selection in the Data Selector window is lost when toggling the Exclude Baseline Monitors or Exclude Quick Runs options	No workaround
72746	Changing the pump pressure units in Options may not automatically update the pump pressure displays in the reports	After changing the pump pressure units in Options, restart the software to ensure that all pressure displays use the new units

72788	The View Audit Trail option is disabled when right clicking on a sequence in the Recently acquired sequences or Recently analysed sequences lists in the Data Selector window	Open any sequence that you want to view the audit trail for first. Right click on any injection from the sequence in the Record View and click View Sequence Audit Trail
72866	Find Limits fails where the RI signal is inverted and there is a single negative peak with no positive peaks	Set limits manually
73366	Calculation method not refreshed when save permission is denied through access control file	No workaround
74953	When importing archives with baseline monitors, the imported baseline monitors are displayed even though the Exclude Baseline Monitors option is selected	Deselect, then reselect the Exclude Baseline Monitors option to refresh the list
75977	The top of the MALS Fit Order view can be cut off	Resize the view
75978	The MALS fit order slider remains on the Raw data view after switching from a MALS method to a non-MALS method if MALS Model/Fit View window is active	Do not have the MALS Model/Fit View as an active window
75979	Baseline fit order may be incorrect for the number of set baseline points	Delete the baselines and reset them
75981	Legends in the overlay, distribution and derived data plots display nonsensical Analysis numbers to differentiate between multiple selected analysed records	No workaround
76127	When exiting the application after the instrument has been disconnected, the user is still asked whether they want to return the pump to standby flow rate	No workaround
77868	Unrun samples are missing from partially run sequences when exported as OMNISEC 10.20 format archives	Export as 10.30 format archives where possible
78274	Some item(s) in data selector list turns green	No workaround
78994	'Results by sample and peak' report table column headers get truncated	No workaround
79089	After a daylight savings time transition, the time displayed in report printouts still uses the old time zone	After the beginning or end of daylight savings, restart the software to ensure that the new time offset is used
80723	Full detector configuration/presence is not recorded in the database	No workaround
80765	Derived data plot shows kick in logMw trace in some circumstances	No workaround
80874	Windows 10 Style Fixes	No workaround
82352	Can accidentally perform operations with keyboard when control button is focused	No workaround

82353	Baselines may not appear on the Raw Data chart even though the points are set	Switch to a different record then switch back. If the problem remains, restart the software.
82355	The target flow rate is lost when clicking the Standby Flowrate button	No workaround
82361	Changing the active light scattering detector in an existing method creates an invalid method before it can be recalibrated	No workaround
83308	When exiting the application while editing a report with unsaved changes, the user may not be asked if they want to save their changes	Make sure any modifications to reports are saved or discarded before exiting the application
84020	The temperature controller of the MALS detector may unexpectedly turn off	No workaround
84117	HiDPI display settings can lock up app with an infinite layout loop on Analysis charts	
84819	Incorrect Baseline zoom	No workaround
84820	Crash when opening a report created by a different user	No workaround
86583	When a user deletes a sequence the samples associated to the deleted sequence is still displayed in database window	No work around
86783	The Save Report As function allows the user to save with the name of another existing report	No workaround
87304	Copy Graph function produces 'fuzzy' graphs	No workaround
87328	Crash when quickly changing between different Themes in the Options window	Do not change the theme when any data is open or being acquired
87330	Crash when another Malvern Panalytical instrument is connected to the same PC as an OMNISEC	Do not connect any other instruments to the PC when an OMNISEC is connected
87790	Baseline Monitor doesn't show 12 hours in the drop down menu when UV not active.	Run a 4 hour baseline
88565	Database Saving with Search Term Returns to unfiltered view	Clear search terms when adding new items to the database.
88615	Retention volume may fail to calculate on the first sample of a sequence when using a method with manually set detector offsets	No workaround
90230	Limit/baseline changes after license expires causes crash	No work around
91107	Axis numbers extend past chromatogram window when highlighting	No Workaround
91580	Multiple limits with narrow distribution WflogMw zoomed out display	No Workaround

92608	SQL Server 2014 Express installation fails	Cycle the PC power and restart the installation
93246	Deleting a recent sequence does not remove it from the Analyze Data list on the Start Page	No workaround
93281	Performing a Full Zoom Out after turning off Auto-Scaling in acquisition does not refresh the axes properly	No workaround
93283	Default Method does not work on MALS 9	No workaround
93497	Error when last MALS point deselected in Model/Fit View	Have at least 1 data point selected
94446	Status bar icons wrap to a second row	Limit the length of the computer/system name. No workaround
94546	Cannot change solvent in run conditions	No Workaround
95426	When user selects "get selection" the application may crash	No Workaround
96064	User can add unbounded length description in Tools > Database editor dialogs	No Workaround.
96583	Unnamed sequences in 10.20 database cause migration to fail	No Workaround
96589	Migration from V30 to V31 discards vital validation error information	No workaround
96708	Error occurred plotting the selected data	No workaround
96817	Index out of range error finding limits on bad baseline data	No workaround
96984	Add Baseline Command does not update the baseline	No Workaround
97099	APC-REVEAL calibration shifts viscometer signal when using BSA	Use a monodisperse sample for calibration.
97390	Crash in Record View on startup	No Workaround
97439	Validation Error in Run Conditions when renaming the sequence to the same as the sample name	No Workaround



MALVERN PANALYTICAL

Groewood Road, Malvern,
Worcestershire, WR14 1XZ, UK

Lelyweg 1, 7602 EA Almelo,
Netherlands
P.O.Box 13, 7600 AA Almelo,
Netherlands

Tel: +44 1684 892456
Fax: +44 1684 892789

Tel: +33 546 534 444
Fax: +33 54 534 598

info@malvernpanalytical.com
www.malvernpanalytical.com

Disclaimer: Although diligent care has been used to ensure that the information in this material is accurate, nothing herein can be construed to imply any representation or warranty as to the accuracy, correctness or completeness of this information and we shall not be liable for errors contained herein or for damages in connection with the use of this material. Malvern Panalytical reserves the right to change the content in this material at any time without notice. Copyright: © 2018 Malvern Panalytical. This publication or any portion thereof may not be copied or transmitted without our express written permission.