



Software Update Notification

Malvern Link II v3.46.1

Date

12 July 2021



Date	12 July 2021
Subject	Software Update Notification - Malvern Link II v3.46.1
Page	2 of 14
Update Notice	The information in this document will allow a risk analysis to be performed to determine if an existing installation should be updated. In this risk analysis the benefits of the new features provided and resolved software issues must be weighed against the risk of new issues that may be introduced to vital areas of the software, possible changes to the results of future analysis or validation of a qualified system.

Index

1. Update Summary	3
2. Software Product Overview	3
2.1. Malvern Link II Edition matrix	3
3. Installation	3
3.1. Instrument compatibility	4
3.2. Mastersizer software compatibility	4
3.3. Minimum System Requirements	4
3.4. Windows Security Policy	4
3.5. Prerequisites	4
3.6. Installing the software	5
3.7. Upgrading previous versions of Malvern Link II	5
3.8. Installation Steps	5
4. Post-Installation	9
4.1. Select language	9
4.2. Registration	10
4.3. Uninstall Procedure	12
4.4. Malvern Link II Directory Structure	12
5. Fixed issues	13
5.1. Discovery of issues	14

Date	12 July 2021
Subject	Software Update Notification - Malvern Link II v3.46.1
Page	3 of 14
Update Notice	The information in this document will allow a risk analysis to be performed to determine if an existing installation should be updated. In this risk analysis the benefits of the new features provided and resolved software issues must be weighed against the risk of new issues that may be introduced to vital areas of the software, possible changes to the results of future analysis or validation of a qualified system.

1. Update Summary

This release introduces an OPC-UA server as part of the Malvern Link II software suite. This means that next to the OPC DA (Classic) server, also the UA server protocol is implemented. All the tags that are exposed by the OPC DA server are exposed by the OPC UA server as well.

Also, several bugs have been fixed, mostly causing application crashes..

2. Software Product Overview

Malvern Panalytical manufactures analyser instruments used for particle-size measurement. The Analyzer instrument is used to monitor and optimize a manufacturing process. Malvern Link II software will provide a single uniform platform for automating the process line interface, analyser instruments and additional hardware.

1. Malvern Link II product suite has five product editions:
2. Malvern Link II Essential
3. Malvern Link II Lite
(simple version for reporting analyser data only)
4. Malvern Link II OEM
(version for controlling analyser only)
5. Malvern Link II Pro
(includes remote reporting and control)
6. Malvern Link II Ultra
(includes remote reporting/control and 21 CFR Part 11 compliance – compatible with Insitec Only)

Note: When you install the Malvern Link II product first time it will install the Malvern Link II version. To update the application version from basic to Pro or Ultra version you must use the License Manager.

2.1. Malvern Link II Edition matrix

Features	Essential	Lite	OEM	Pro	Ultra
Automation Cabinet OPC Server	✓	✓	✓	✓	✓
Device Configuration	✓	✗	✗	✓	✓
Mimic Designer	✓	✗	✗	✓	✓
Analyser Interface	✓	✓	✓	✓	✓
Document Portfolio	✓	✗	✗	✓	✓
SOP Studio	✓	✗	✓	✓	✓
Alarm E-Mail notification	✓	✗	✓	✓	✓
User Security Management	✓	✗	✗	✓	✓
Modbus OPC Server	✗	✓	✓	✓	✓
Malvern Link II OPC Server	✗	✓	✓	✓	✓
Remote Control	✗	✗	✓	✓	✓
Data export (Fieldbus, Wired IO, OPC)	✗	✓	✓	✓	✓
LIMS Integration	✗	✗	✓	✓	✓
SOP versioning	✗	✗	✗	✗	✓
Changes tracking	✗	✗	✗	✗	✓
Advanced Security	✗	✗	✗	✗	✓

3. Installation

It is assumed that you have authority to install or update software within your facility. It is also assumed that you have Administrator rights for the system upon which the software is installed, as this is a requirement of the installation process. If you do not have this authority, please consult with your I.T. support department before proceeding.

Date	12 July 2021
Subject	Software Update Notification - Malvern Link II v3.46.1
Page	4 of 14
Update Notice	The information in this document will allow a risk analysis to be performed to determine if an existing installation should be updated. In this risk analysis the benefits of the new features provided and resolved software issues must be weighed against the risk of new issues that may be introduced to vital areas of the software, possible changes to the results of future analysis or validation of a qualified system.

3.1. Instrument compatibility

The Malvern Link II v3.20 software is compatible with:

- the following model of Insittec
 - ITB5xxx and ITT5xxx : Insittec 2000 model
 - IDC5xxx : Insittec 2004 model
 - ITX5xxx : Insittec X model
 - ILC5xxx : Insittec Liquid
- the Mastersizer 2000
- the Mastersizer 3000
- the Zetasizer family:
 - Zetasizer
 - APS

3.2. Mastersizer software compatibility

The recommended version of Mastersizer software for this release of Malvern Link II software is version 3.72.

3.3. Minimum System Requirements

The key minimum requirements for running this software are highlighted in the table below:

Feature	Specification
CPU	Intel Core i7
Memory	4GB
Hard Disk Storage	160 Giga Byte
Display Resolution	1024 x 768
Operating System	Windows 8 Professional Windows 10 Professional (preferred)

3.4. Windows Security Policy

The user must have the Administrator rights in order to install Malvern Link II software

3.5. Prerequisites

The Malvern Link II automation software requires that the following already be installed on the PC, in addition to the Operating System requirements:

Software	Description
1. Microsoft .NET Framework 3.5 and 4.x	Microsoft .Net core components
2. OPC Core Components Redistributable (x86) 101.2	OPC foundation redistributable components
3. RTSizer Software (version 7.40 minimum)	Insittec Software (if applicable)
4. Mastersizer 2000 Software	Mastersizer 2000 software (if applicable)
5. Mastersizer 3000 Software (version 3.72)	Mastersizer 3000 software (if applicable)
6. Zetasizer Software	Zetasizer software (if applicable)

The Microsoft .NET Framework 4.0 should be activated in windows, before the installation is done. The computer needs to be connected to the internet or have access to the appropriate Windows installation media. The Microsoft .NET Framework 4.0 can be activated by following the steps below:

- Open the windows Control Panel
- Click on Programs
- Click on Turn Windows Feature on or off
- Select .NET Framework 3.5 and .NET Framework 4.x (ASP.NET 4.x), where x is a number 0 or higher depending on the Windows version and the update state of the computer.
- Click on the OK button



Date	12 July 2021
Subject	Software Update Notification - Malvern Link II v3.46.1
Page	5 of 14
Update Notice	The information in this document will allow a risk analysis to be performed to determine if an existing installation should be updated. In this risk analysis the benefits of the new features provided and resolved software issues must be weighed against the risk of new issues that may be introduced to vital areas of the software, possible changes to the results of future analysis or validation of a qualified system.

3.6. Installing the software

The Malvern Link II software can be installed by running the executable “setup.exe” in the root of the installation medium. If prompted to install prerrequired software components, install these components first. Malvern Link II installation will resume after all required software is installed.

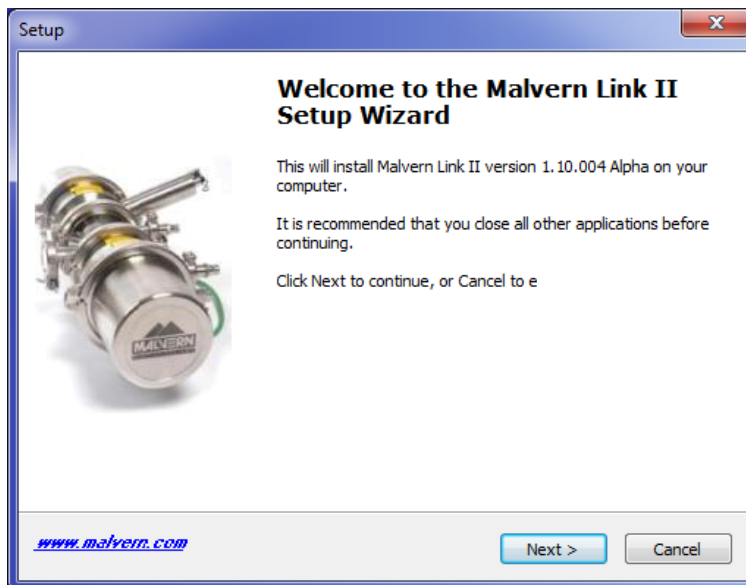
3.7. Upgrading previous versions of Malvern Link II

You must uninstall any previous version before installing Malvern Link II. Please backup the existing configuration first, using the Malvern Link Backup Tool.

3.8. Installation Steps

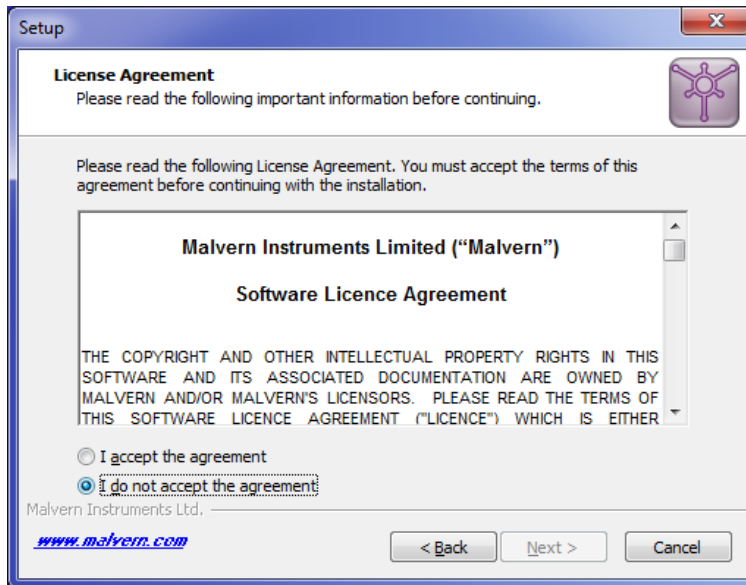
This section describes the installation steps of Malvern Link II product.

1. Double click the Malvern Link II setup. The setup will start and the following window is displayed.

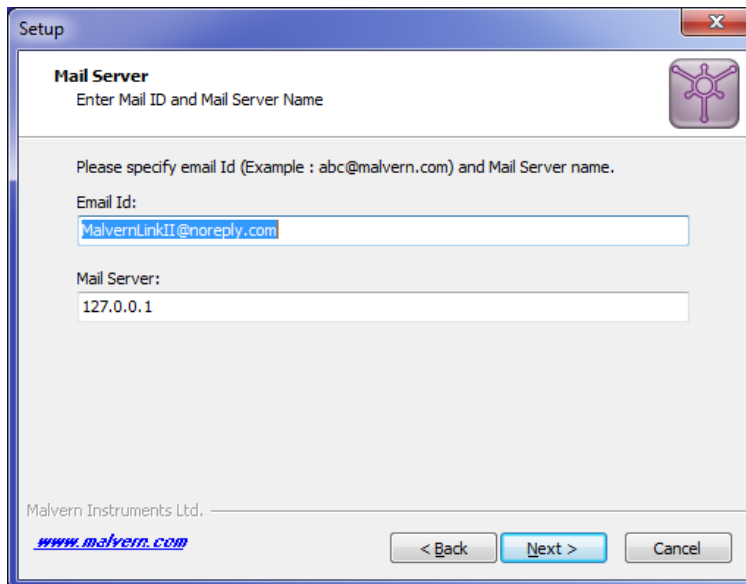


2. Click **Next**. The **License Agreement** window is displayed.

Date	12 July 2021
Subject	Software Update Notification - Malvern Link II v3.46.1
Page	6 of 14
Update Notice	The information in this document will allow a risk analysis to be performed to determine if an existing installation should be updated. In this risk analysis the benefits of the new features provided and resolved software issues must be weighed against the risk of new issues that may be introduced to vital areas of the software, possible changes to the results of future analysis or validation of a qualified system.

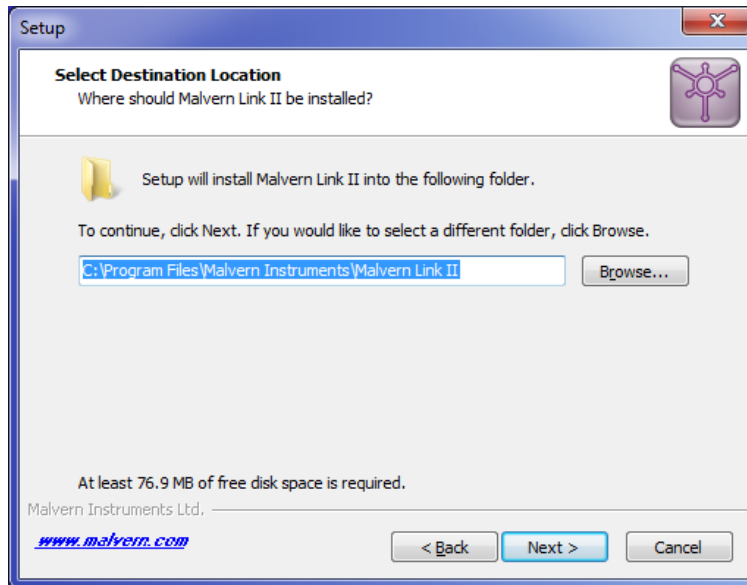


3. select **I accept the agreement** and click **Next**. The **Mail Server** window is displayed.

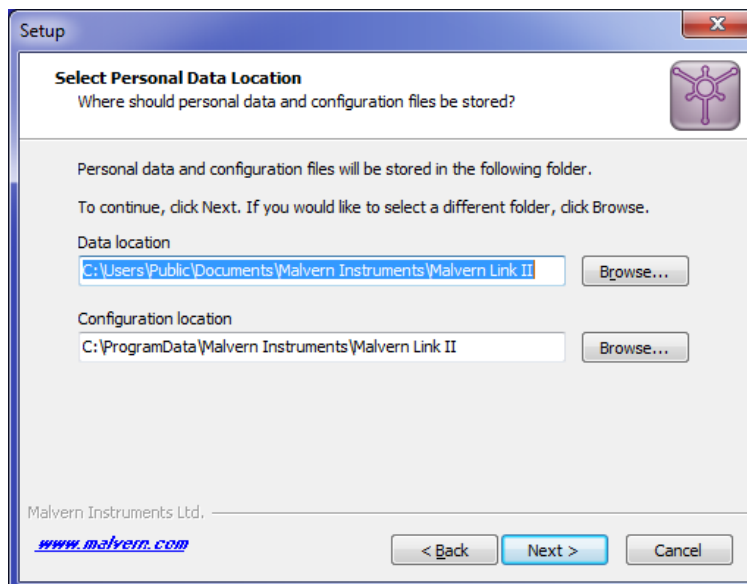


- The E-mail address is used for identifying further Malvern Link II alarms.
 - The Mail server should be the local E-mail server e.g. mail.server.com or 172.154.1.1
4. Type the e-mail Id and mail server name in the **Email Id** and **Mail Server** fields and click **Next**. The **Select Destination Location** is displayed with the default location of the installation directory.

Date	12 July 2021
Subject	Software Update Notification - Malvern Link II v3.46.1
Page	7 of 14
Update Notice	The information in this document will allow a risk analysis to be performed to determine if an existing installation should be updated. In this risk analysis the benefits of the new features provided and resolved software issues must be weighed against the risk of new issues that may be introduced to vital areas of the software, possible changes to the results of future analysis or validation of a qualified system.

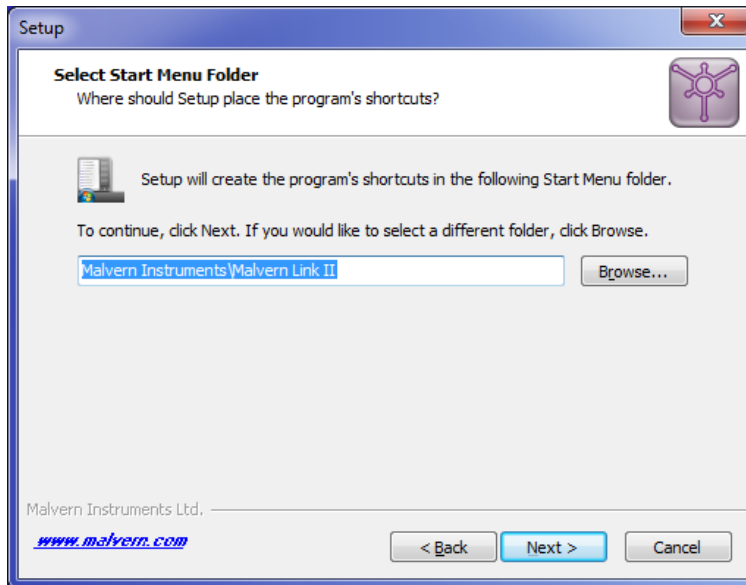


5. Default installation location is displayed, to change the installation location click **Browse** and select the required location where the Malvern Link II product shall be installed and click **Next**. The **Select Personal Data Location** window is displayed with the default locations of Malvern Link II data and configuration files.

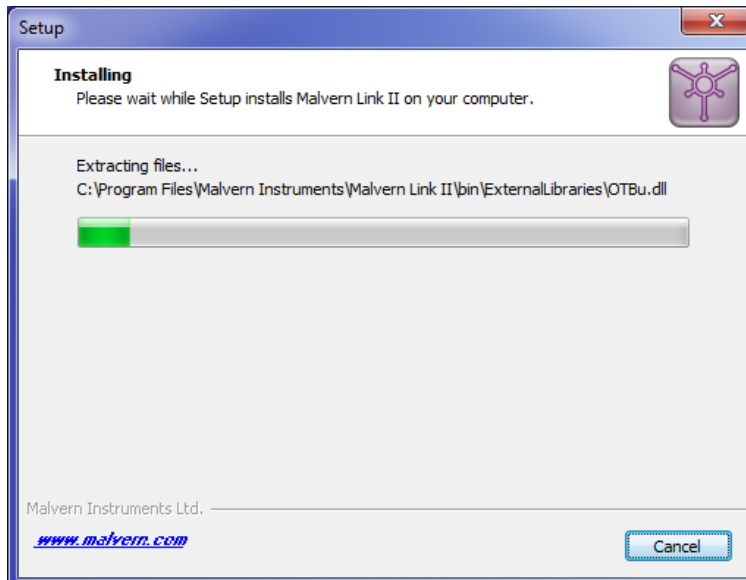


6. Default installation configuration files location and default data location are displayed, to change the locations click **Browse** and select the required location where the Malvern Link II data and configuration files shall be installed and click **Next**. The **Select Start Menu Folder** window is displayed with the default location of Malvern Link II shortcuts. Installation location for data files must be in Shared Folders to enable non-Administrator user access.

Date	12 July 2021
Subject	Software Update Notification - Malvern Link II v3.46.1
Page	8 of 14
Update Notice	The information in this document will allow a risk analysis to be performed to determine if an existing installation should be updated. In this risk analysis the benefits of the new features provided and resolved software issues must be weighed against the risk of new issues that may be introduced to vital areas of the software, possible changes to the results of future analysis or validation of a qualified system.



7. Click **Browse** to select the required location where Malvern Link II shortcuts should be placed and click **Next**. The **Ready to Install** window is displayed with the summary of destination location and the start menu folder location.



8. Click **Install**. Malvern Link II installation starts, and the installing window is displayed.

*Note: If default process definitions exist in the configuration folder, the setup shall display a message **Default Process Definitions already exist. Do you want to overwrite?** Click "Yes" if you want to overwrite the existing configurations. Before copying the files, the setup will perform a Windows Registry Cleaning.*

Date	12 July 2021
Subject	Software Update Notification - Malvern Link II v3.46.1
Page	9 of 14
Update Notice	The information in this document will allow a risk analysis to be performed to determine if an existing installation should be updated. In this risk analysis the benefits of the new features provided and resolved software issues must be weighed against the risk of new issues that may be introduced to vital areas of the software, possible changes to the results of future analysis or validation of a qualified system.

9. After successful installation, the **Completing the Malvern Link II Setup Wizard** window is displayed.



10. Click **Finish**.

4. Post-Installation

This section describes the procedure to be executed after installing the Malvern Link II product.

4.1. Select language

This section describes the language selection of Malvern Link II.

1. Go to **Start->All Programs->Malvern Instruments->Malvern Link II->Language Selector**. The application will start and the following window is displayed.



2. Select the required language and click **OK**.



Date	12 July 2021
Subject	Software Update Notification - Malvern Link II v3.46.1
Page	10 of 14
Update Notice	The information in this document will allow a risk analysis to be performed to determine if an existing installation should be updated. In this risk analysis the benefits of the new features provided and resolved software issues must be weighed against the risk of new issues that may be introduced to vital areas of the software, possible changes to the results of future analysis or validation of a qualified system.

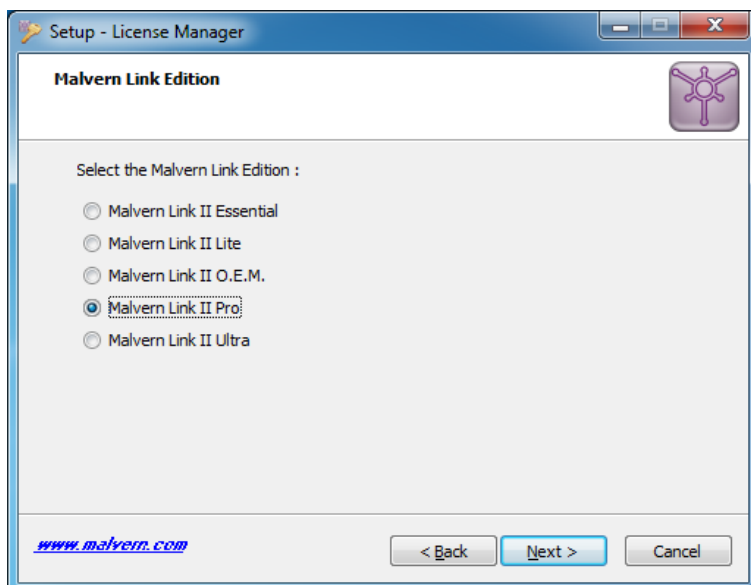
4.2. Registration

The section describes the registration process from Malvern Link II version to Malvern Link II Pro version or Malvern Link II Ultra version.

1. Go to **Start->All Programs->Malvern Instruments->Malvern Link II->License Manager**.

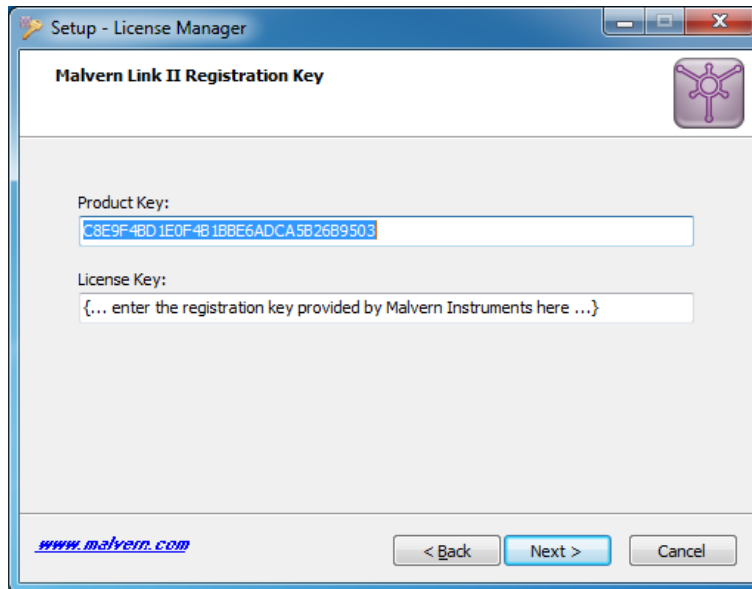


2. Click on **Next**.



3. Select the **Malvern Link II** edition and click on **Next**.

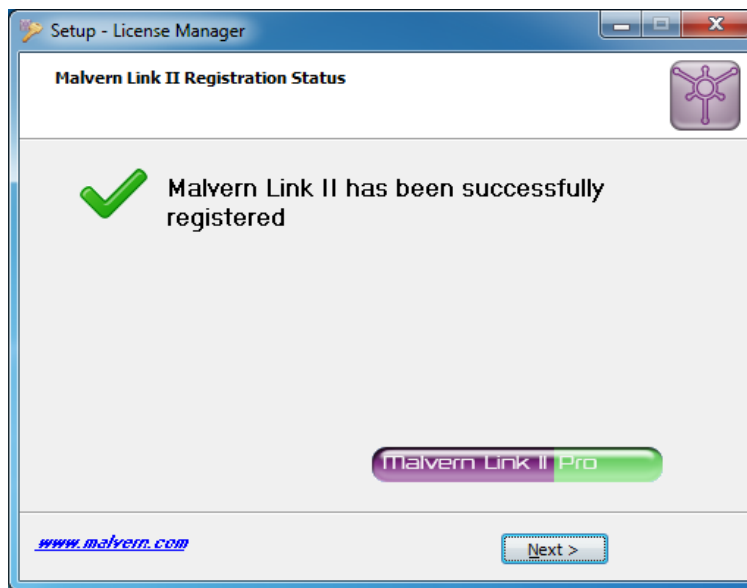
Date	12 July 2021
Subject	Software Update Notification - Malvern Link II v3.46.1
Page	11 of 14
Update Notice	The information in this document will allow a risk analysis to be performed to determine if an existing installation should be updated. In this risk analysis the benefits of the new features provided and resolved software issues must be weighed against the risk of new issues that may be introduced to vital areas of the software, possible changes to the results of future analysis or validation of a qualified system.



4. Type the registration key of the selected **Product Key** in the **Registration Key** field and click **Next**.



Date	12 July 2021
Subject	Software Update Notification - Malvern Link II v3.46.1
Page	12 of 14
Update Notice	The information in this document will allow a risk analysis to be performed to determine if an existing installation should be updated. In this risk analysis the benefits of the new features provided and resolved software issues must be weighed against the risk of new issues that may be introduced to vital areas of the software, possible changes to the results of future analysis or validation of a qualified system.



5. A message is displayed after registration is successful or not.

4.3. Uninstall Procedure

The software may be uninstalled using the standard Add/Remove Programs feature within the Windows control panel.

4.4. Malvern Link II Directory Structure

This section describes the Malvern Link II default directory locations after installation. Malvern Link II is installed in the following three directories:

1. **Installation Directory:** Contains all assemblies and executables of Malvern Link II. The installation setup of Malvern Link II provides the facility to select the installation directory. The default location of the installation directory is given below:
 - {Program Files (x86)}\Malvern Instruments\ Malvern Link II
2. **Configuration Directory:** Contains the configuration files of the process definitions. Malvern Link II installation also provides few default process definitions in the setup. The default location of the configuration directory is given below:
 - {ProgramData}\Malvern Instruments\Malvern Link II\Configuration
3. **Data Directory:** Contains the process definition data saved at run time in Malvern Link II application. This directory contains the measurement data, batch details and logging details. The default location of the data directory is given below:
 - {All Users}\Documents\Malvern Instruments\Malvern Link II\Data



Date	12 July 2021
Subject	Software Update Notification - Malvern Link II v3.46.1
Page	13 of 14
Update Notice	The information in this document will allow a risk analysis to be performed to determine if an existing installation should be updated. In this risk analysis the benefits of the new features provided and resolved software issues must be weighed against the risk of new issues that may be introduced to vital areas of the software, possible changes to the results of future analysis or validation of a qualified system.

5. Fixed issues

The following issues have been fixed in this release:

MLII-260 - Mimic path wrong after performing "Save as"

After performing a "Save as" operation on a configuration, the path stored in the mimic was still pointing to the original configuration. Any changes to the mimic of the new configuration were saved in the original location. This has been corrected.

MLII-271 - MLII Crash from SOP Details within Configuration Manager

When using sorting in the SOP Details screen of the Configuration Manager, the application crashes. A faulty and redundant third-party component has been removed and the interface has been cleaned up. An additional feature to double click and view the selected SOP has been added.

MLII-276 - OPC UA Security Authorisation

There are two security policies available in the OPC UA server: Basic256Sha256, and Aes128Sha256RsaOaep. When the client application requires these policies for encrypting the communication, the client certificate needs to be added to the directory c:\ProgramData\OPC Foundation\pki\trusted\certs\ and optionally removed from the directory c:\ProgramData\OPC Foundation\pki\rejected\certs\

MLII-283 - DCS OPC server reconciliation

Occasionally, when writing to the DCS OPC server, the values are not written correctly. By improving the code, the values should now be written correctly, all the time.

MLII-289 - Script executor agent causes error on KeepAlive()

In the diagnostic logs, the following error is sometimes displayed:

|Error|MIL.MPAT.Framework.DAL.ScriptExecutorAgent|Cannot access a disposed object. This error was caused by improper use of the Script Service Client. This has been corrected.

MLII-290 - Run time crash in Alarms and Actions views

When using the Alarms and the Action views in the runtime environment, the views can cause Malvern Link II to crash. Either by sorting or by resizing the screen (e.g. by using remote desktop). A faulty and redundant third-party component has been removed and the interface has been cleaned up.

MLII-291 - Unable to close Alarm, Batch and Action tabs in run time UI

In the runtime environment of Malvern Link II, additional tabs can be opened for Alarm, Batch, Actions, etc. These tabs could be opened, but never closed. This behaviour has been corrected. Now the tabs that are opened by the user can be closed as well.

MLII-303 - Zetasizer: allow full path to be supplied

When using the Zetasizer, only the filename of the measurement file could be supplied. Now, both the filename of the measurement file can be supplied, as well as the full path of this file.

MLII-311 - Config settings within the OPC UA configuration

A configuration view for the OPC UA service has been added to the Malvern Link II Configuration Application. This view allows users to set the OPC UA service active, allow anonymous access, see the address of the OPC server and add and remove OPC UA users.

Date	12 July 2021
Subject	Software Update Notification - Malvern Link II v3.46.1
Page	14 of 14
Update Notice	The information in this document will allow a risk analysis to be performed to determine if an existing installation should be updated. In this risk analysis the benefits of the new features provided and resolved software issues must be weighed against the risk of new issues that may be introduced to vital areas of the software, possible changes to the results of future analysis or validation of a qualified system.

5.1. Discovery of issues

If you find an issue with this software, please report it to Malvern instruments via your local representative or directly to the UK helpdesk.