



# Software Update Notification



PSS0023-07: Malvern Link v1.39 software

## Abstract

This document details the release of software PSS0023-07. This is version 1.39 of the automation software for the Insitec laser diffraction system. It covers software issues that have been fixed and new features introduced. This information is required to perform a risk analysis to determine if the software should be installed. In this risk analysis the benefits of the new features provided and resolved software issues must be weighed against the risk of new issues that may be introduced to vital areas of the software or possible changes to the results of future analysis. Installation instructions are provided.

## Installation

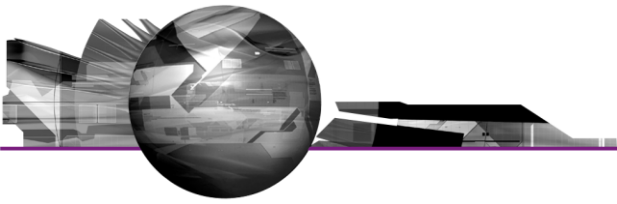
It is assumed that you have authority to install or update software within your facility. It is also assumed that you have Administrator rights for the system upon which the software is installed, as this is a requirement of the installation process. If you do not have this authority please consult with your I.T. support department before proceeding.

## Minimum System Requirements

The key minimum requirements for running this software are highlighted in the table below:

| Feature                  | Specification   |
|--------------------------|---|
| CPU                      | Pentium IV 2 GHz or Pentium M 1.4 GHz   |
| Memory                   | 1GB or 2GB when using Windows Vista.  |
| Hard Disk Storage        | 80Gbyte   |
| Additional Storage Media | CD-ROM drive  |
| Display Resolution       | 1024 x 768  |
| Connectivity             | 2 RS232 COM port  |
| Operating System         | Windows Vista Business or Enterprise Edition™<br>Windows XP Professional™ with SP2 or higher installed<br>Windows 2000 Professional™ with SP4 or higher installed |

Although the software has been tested using Windows 2000™ and Windows Vista Business Edition™, Windows XP Professional™ is the preferred operating system.



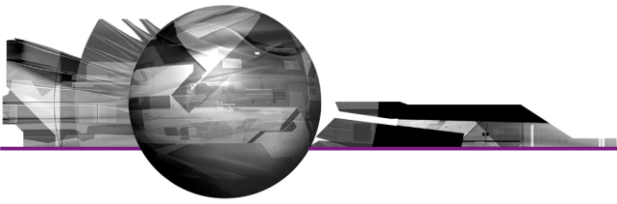
### Instrument compatibility

The Malvern Link v1.38 software is compatible with the following model of Insitec

- ITB5xxx and ITT5xxx : Insitec 2000 model
- IDC5xxx : Insitec 2004 model
- ITX5xxx : Insitec X model
- ILC5xxx : Insitec Liquid

| ITB     | ITT     | ITX     | IDC     | ILC     |
|---------|---------|---------|---------|---------|
| ITB5121 | ITT5121 | ITX5121 | IDC5111 | ILC5112 |
| ITB5122 | ITT5123 | ITX5123 | IDC5113 | ILC5212 |
| ITB5123 | ITT5221 | ITX5131 | IDC5121 | ILC5312 |
| ITB5221 | ITT5223 | ITX5133 | IDC5123 | ILC5412 |
| ITB5222 | ITT5321 | ITX5221 | IDC5131 | ILC5612 |
| ITB5321 | ITT5323 | ITX5223 | IDC5133 |         |
| ITB5322 | ITT5321 | ITX5231 | IDC5141 |         |
| ITB5421 | ITT5323 | ITX5233 | IDC5143 |         |
| ITB5422 |         | ITX5321 | IDC5211 |         |
|         |         | ITX5323 | IDC5213 |         |
|         |         | ITX5331 | IDC5221 |         |
|         |         | ITX5333 | IDC5223 |         |
|         |         | ITX5421 | IDC5231 |         |
|         |         | ITX5423 | IDC5233 |         |
|         |         | ITX5431 | IDC5241 |         |
|         |         | ITX5433 | IDC5243 |         |
|         |         |         | IDC5311 |         |
|         |         |         | IDC5313 |         |
|         |         |         | IDC5321 |         |
|         |         |         | IDC5323 |         |
|         |         |         | IDC5331 |         |
|         |         |         | IDC5333 |         |
|         |         |         | IDC5341 |         |
|         |         |         | IDC5343 |         |
|         |         |         | IDC5411 |         |
|         |         |         | IDC5413 |         |
|         |         |         | IDC5421 |         |
|         |         |         | IDC5423 |         |
|         |         |         | IDC5431 |         |
|         |         |         | IDC5433 |         |
|         |         |         | IDC5441 |         |
|         |         |         | IDC5443 |         |

**Note: Malvern Link version 1.36 onwards is not compatible with Insitec 97 models.**



### Installation Instructions

Before installing Malvern Link the following software must be installed:

|   | Software                                | Description   |
|---|---|---|
| 1 | Hasp USB key driver                     | iFix™ hardware key driver. The driver is part of CD-ROM in the following folder :<br>\Tools\iFix Usb key Driver |
| 2 | iFix™ Software version 3.5              | GE Fanuc Scada™ package   |
| 3 | RTSizer Software (version 7.11 minimum) | Insitec Software  |

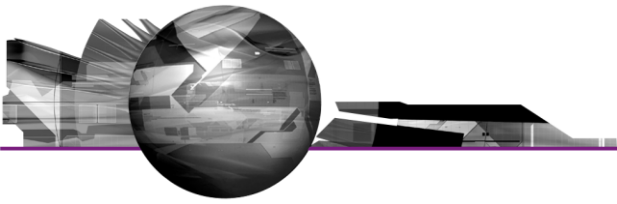
The Malvern Link software is provided on one auto-loading CD-ROM. Inserting the CD-ROM into a system configured to auto-run a CD will run the installation program automatically. If your system does not support this feature run the **lsetup.exe** program from the root directory of your CD drive.

**Note:** The full installation procedure is described in the following document

*\Technical Doc\ TNML-General Setup Instructions (GM – 20APR2005).pdf.*

### Uninstall Procedure

The Malvern Link software can be uninstalled using the standard **Add/Remove Programs** feature in the Windows 'Control panel'.



## New Features

### Windows Vista™ Support

**Note:**

**In order to be vista compatible you must turn off the Windows U.A.C feature. This is because iFix and RTSizer are not fully compatible with the new Windows directory structure and the new Windows registry database requirement.**

## Fixed Issues

The following Software Change Requests (SCRs) have been implemented in version 1.38 of the Malvern Link software:

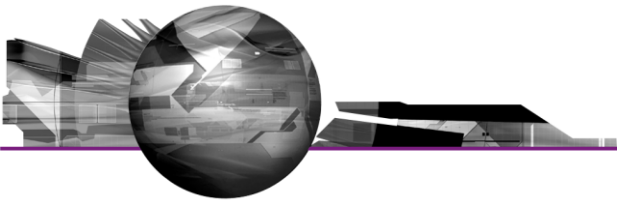
| SCR Number | Description  | Comments    |
|------------|--|-------------|
| 7986       | PC hangs up after a background measurement                                     | Fixed       |
| 7987       | Wiper error appears after opening the iFix Tag windows                         | Fixed       |
| 7988       | Fast cleaning option   | Implemented |
| 7989       | Add a timer on low scattering signal error before stopping At-Line Measurement | Implemented |
| 8049       | Problem with customer specific configuration.                                  | Fixed       |
| 8055       | Add an option for clearing the alarms automatically                            | Implemented |
| 8056       | The batch tracker should report an error if the batch is empty (no record)     | Implemented |
| 8448       | The Batch Results window doesn't display long PCV title                        | Fixed       |
| 8449       | Malvern Link should not return "Undefined Error". It should be more explicit   | Implemented |

## Deletions

From version 1.36, Malvern Link software doesn't support Insitac 97 models

## Known Issues

If you find an issue with this software which is not listed below, please report it to Malvern instruments via your local representative or directly to the UK helpdesk.



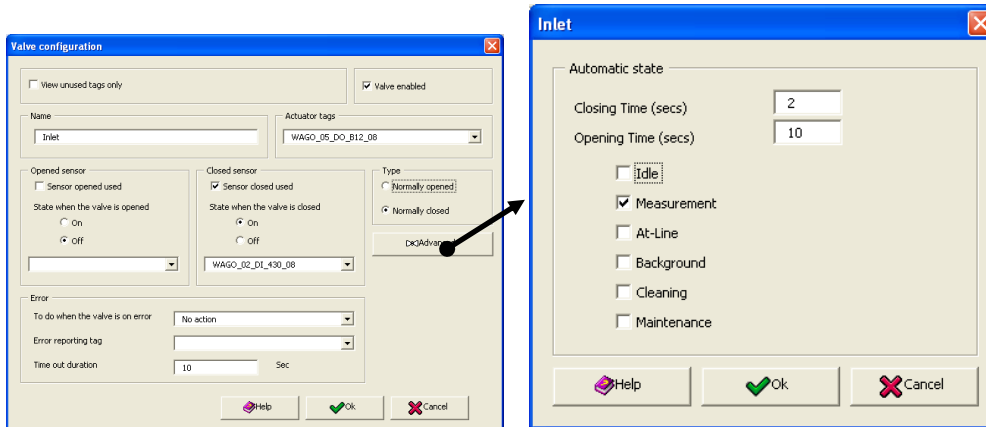
## New features

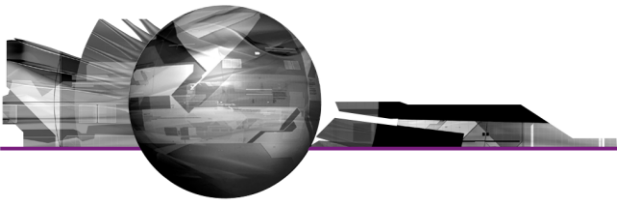
### Fast Cleaning Option

An option has been added in order to add a cycle on each valve.

The user decides when the cycle has to be active. The configuration parameters are available in the valve configuration window.

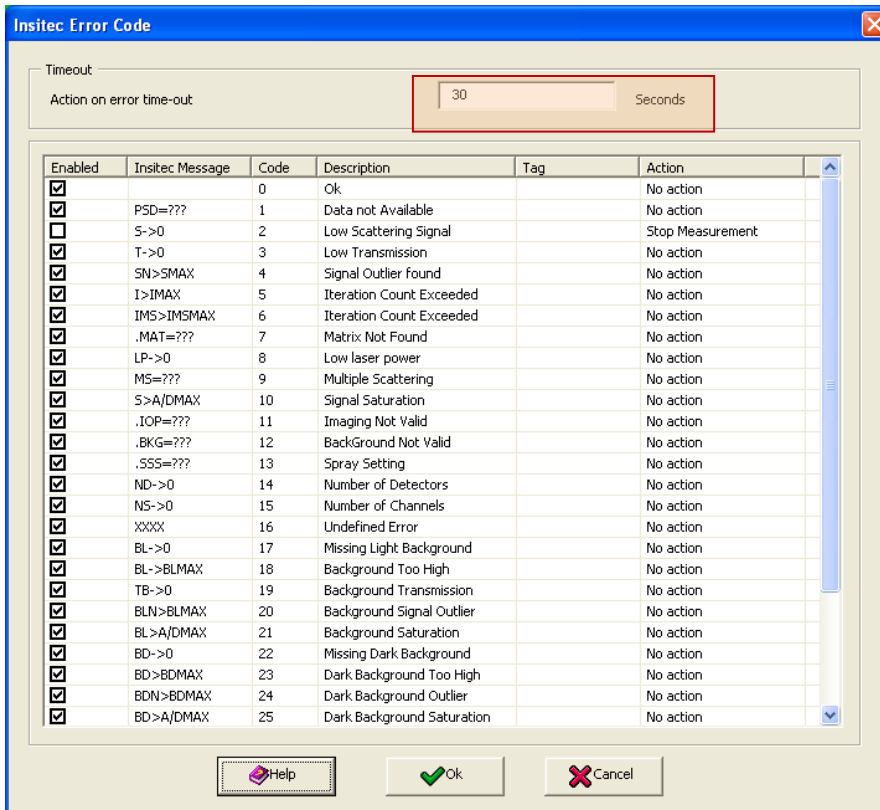
When the option is activated on the Inlet valve, the booster cleans the probe regularly.

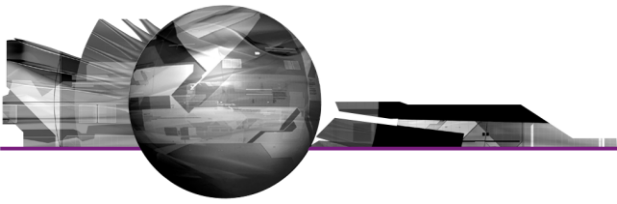




### RTSizer Error. Timeout before starting the action on alarm

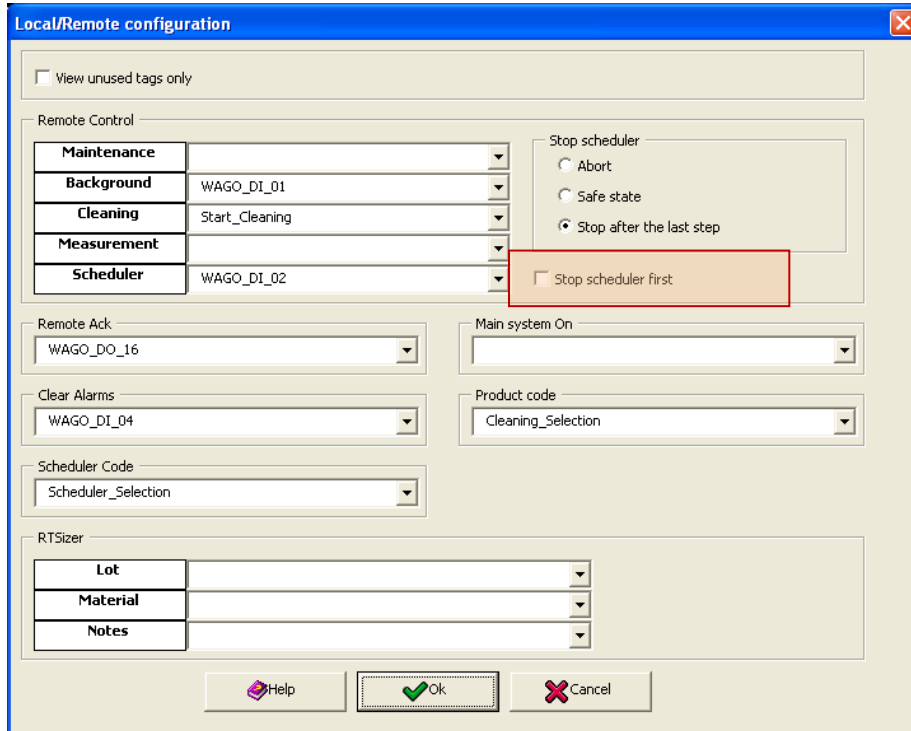
After a measurement error, the action on is automatically started. The new option defines a buffer time before starting the action.

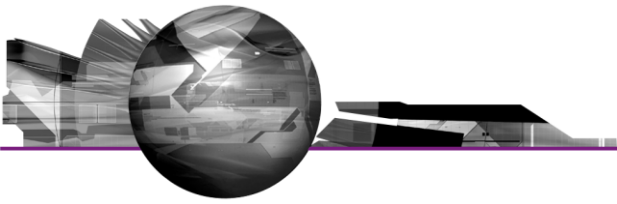




### Process Control Variables error

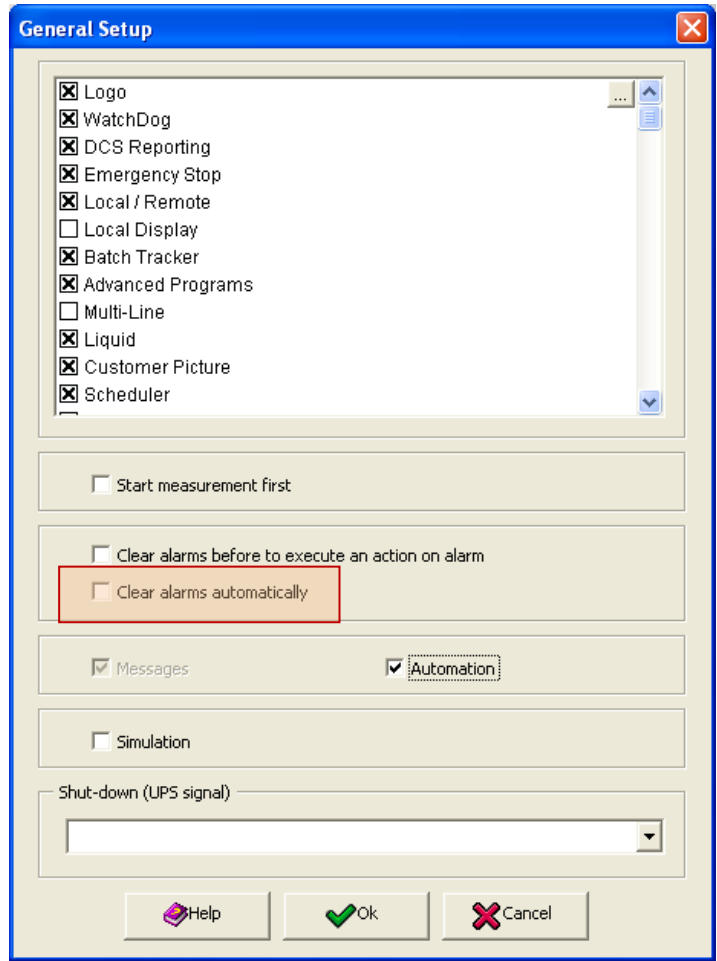
If a background is requested during a scheduler, a new option has been added to stop the scheduler first before performing the background





### Automatic Clear Alarms option

The new options allows emptying the alarm list when there is no alarm active

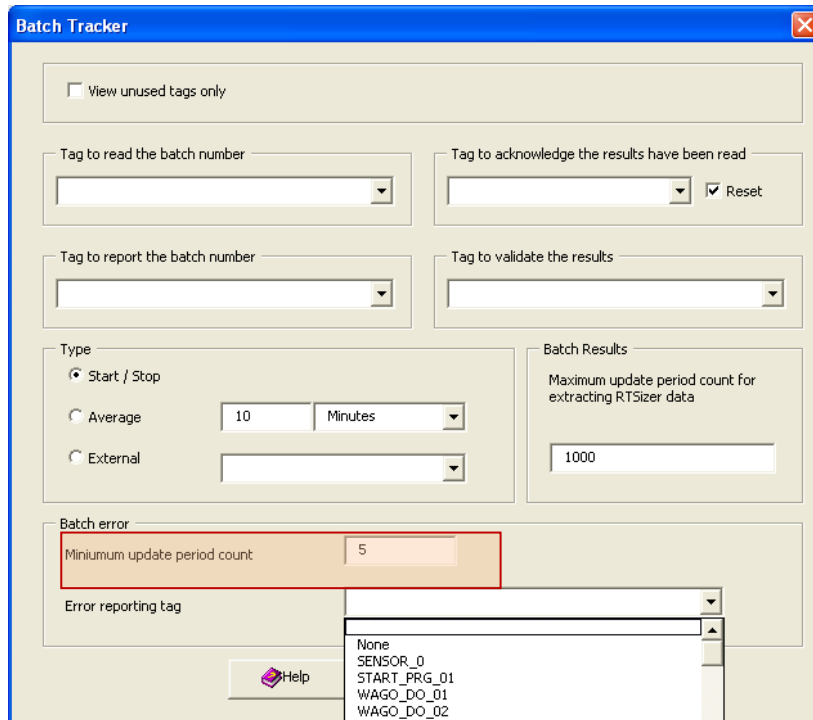


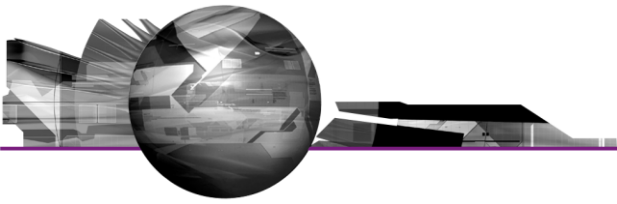




### New batch tracker error

A new error has been added. The error is raised when the number of record in the batch results is below a threshold. The user has to define the threshold. If the value is 0 the error will never be seen.

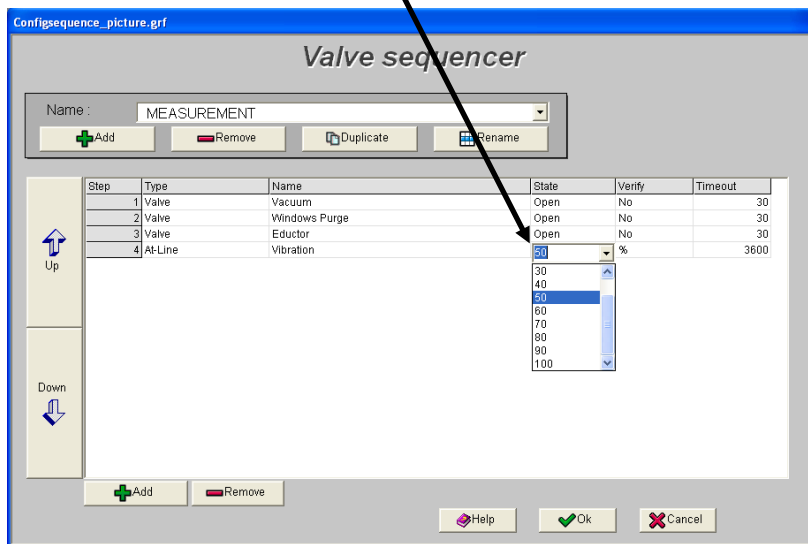
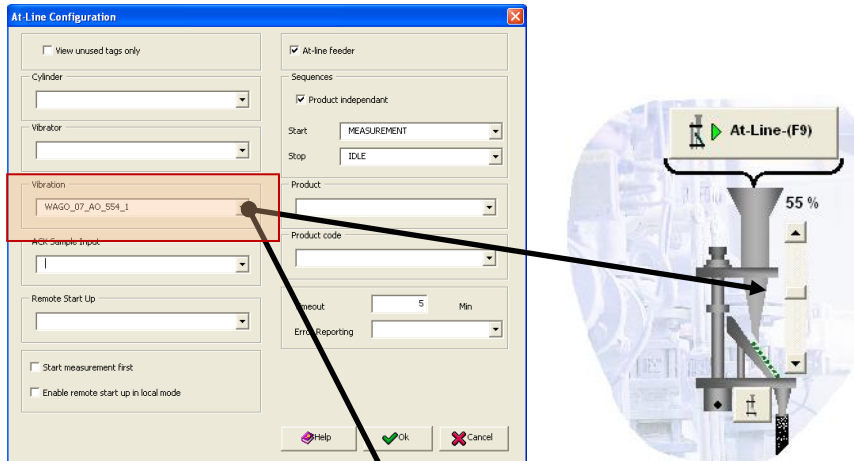




## At-Line Vibration Feeder Adjustment

A new tag has been added to the At-Line option. The tag allows vibration feeder adjustment.

Clicking on the button Start/Stop vibration on the mimic will set the vibration to 0 for stopping or set the vibration to the previous value for starting the vibration



## Software Update History

The software update notification documents relating to previous versions of the Malvern Link software are available from the support section of the Malvern Instruments website ([www.malvern.com](http://www.malvern.com)). Please refer to these documents for details of the new features released within each version of the Malvern Link software.