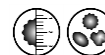


Software Update Notification

PSS 0025-22 Morphologi Software v7.42



Overview

This document details the release of software PSS0025-22. This is the Morphologi software version 7.42.

It covers software issues fixed and new features introduced.

This information is required to perform a risk analysis to determine if the software should be installed. In this risk analysis the benefits of the new features provided and resolved software issues must be weighed against the risk of new issues that may be introduced to vital areas of the software or possible changes to the results of future analysis.

Installation instructions are provided.

Operating System Support

This software is tested and supported on Windows 7 (32-bit) and Windows XP Pro™ SP3 (32-bit).

Note. Some 3rd party software or OS patches may prevent the Morphologi software from running correctly. It is not possible to test for compatibility with all windows programs.

Windows 2000™, Windows 95/98/Me™, Windows NT 4.0™, and Windows Vista™ are not supported. 64 bit operating systems are not supported in this release.

Recommended minimum computer requirements

DELL Mini Tower PC with keyboard and operating system, Windows XP SP3 or Windows 7 (32-bit), 2.8GHz Intel Xeon W3530 Processor, 4Gb RAM, 1Tb HDD, DVD +/-R/RW, Firewire (IEEE1394) card and at least one USB port, complete with mouse, keyboard and 1 x 22" Widescreen Flat Panel Monitor for software and 1 x 19" Flat Panel Monitor for live video feed.

Installation

It is assumed that you have authority to install or update software within your company's SOPs. If you do not have this authority please consult with your I.T. support department before proceeding.

It is assumed that you have Administrator rights for the computer. This is required by the installation process.

The software is supplied on a CD-ROM that will automatically start the installation process when inserted into the drive. If your system does not support this feature run the **Morphologi\setup.exe** program from the root directory of your CD drive.

Upgrading Installation

Always uninstall any existing version of the Morphologi software before installing any other.

Uninstall procedure

The software can be uninstalled using the standard Add/Remove feature in the Windows 'Control panel'.

Note. Uninstalling previous versions of the software will remove all the standard Malvern reports, even if they have been edited. Best practice is to avoid overwriting standard Malvern reports.

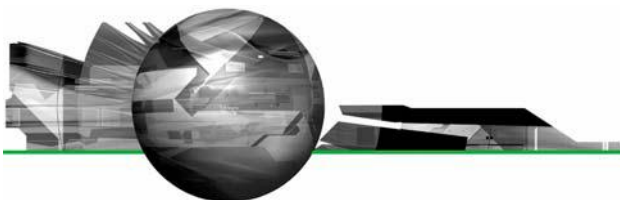
Back compatibility

This version is back compatible with all prior versions of the Morphologi software.

Note that existing systems must not be upgraded from version 5.xx until a Malvern representative has visited to perform an 'instrument characterization' process.

Morphologi G2, G3 and G3S instruments are supported.

There is no support for the predecessor PVS 830 instrument with this release.



New features summary

- Support for new Nikon power supply

Fixed issues

Description
Z drive continuously winds down on startup with sticky relay
Allow particle data to go into a write once folder
View composite does not work when there are dots in the measurement file name
Z stacking shows a degree of image "ghosting" that results in doublets
A broken Z switch can damage the Z drive

Known issues

If you find an issue with this software that is not listed below please report it to Malvern Instruments via your local Malvern Instruments representative or directly to the UK helpdesk using the contact information below.

SCR5901: Stopping a merge while measuring with the first optic aborts only the current optic and goes on to measure with the second.

Workaround is to stop each optic in the merge.

Power saving.

If the computer goes into standby mode after a period of inactivity the measurement can hang. Since measurements of large areas can take some time this is a likely event. The solution is to disable the power saving options of the computer using the instructions in *Appendix A: Disabling power saving*.

Remote PC 3rd party support software packages.

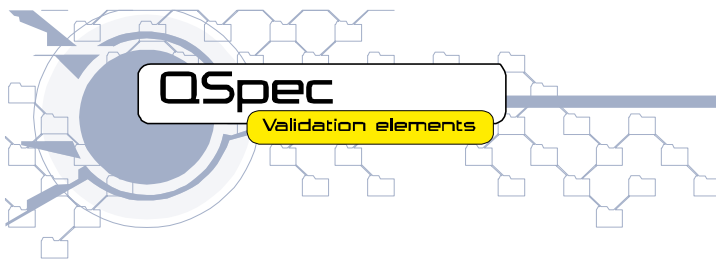
Installation of software for remote PC support and desktop sharing can interfere with the live display on the second monitor and cause the software to crash during measurement.

Data backup.

Backup of data to external devices like external hard drives or network servers during measurement can slow down the measurement or cause the software to crash. Automatic backups should be scheduled at times when the instrument is not in use.

Upgrading an existing installation requires that the camera driver is also upgraded.

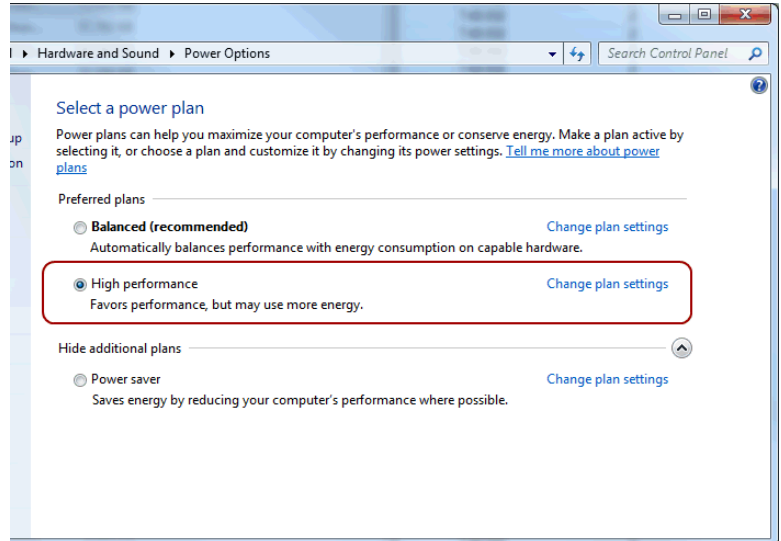
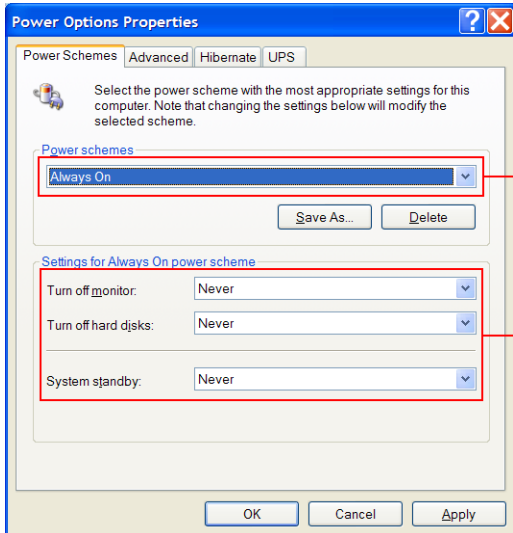
To upgrade the camera driver once the Morphologi software has been upgraded, ensure that the camera is attached to the PC then open the windows device manager and uninstall the Baumer camera driver. Then scan for hardware changes and direct windows to the drivers\camera folder inside the Morphologi installation folder. For details see Malvern technical note "Updating the camera driver on a Morphologi instrument" (MRK1516) available from Malvern helpdesk or your local service representative.



Appendix A: Disabling power saving.

To disable the power saving options of the computer use the **Power Options** available in **Control Panel**.

Modify the default settings to those highlighted below for your OS - XP(left), Windows 7 (right).



Malvern Instruments Ltd

Enigma Business Park • Grovewood Road • Malvern •
Worcestershire • UK • WR14 1XZ
Tel: +44 (0)1684 892456 • Fax: +44 (0)1684 892789

Malvern Instruments Worldwide

Sales and service centers in over 50 countries for details visit
www.malvern.co.uk/contact

more information at www.malvern.com